

# V5 SmartECAD

The Direct CAD Integration between ENOVIA SmarTeam® and EPLAN®

The increasing networking and demand for process optimization in enterprises leads to a very strong requirement: Continuous flow of information through the mechanical and electrical design.

## That is the Reason for SmartECAD

**SmartECAD** offers a simple and overall integration - currently known almost only to the mechanical design - now also for the electrical engineering!

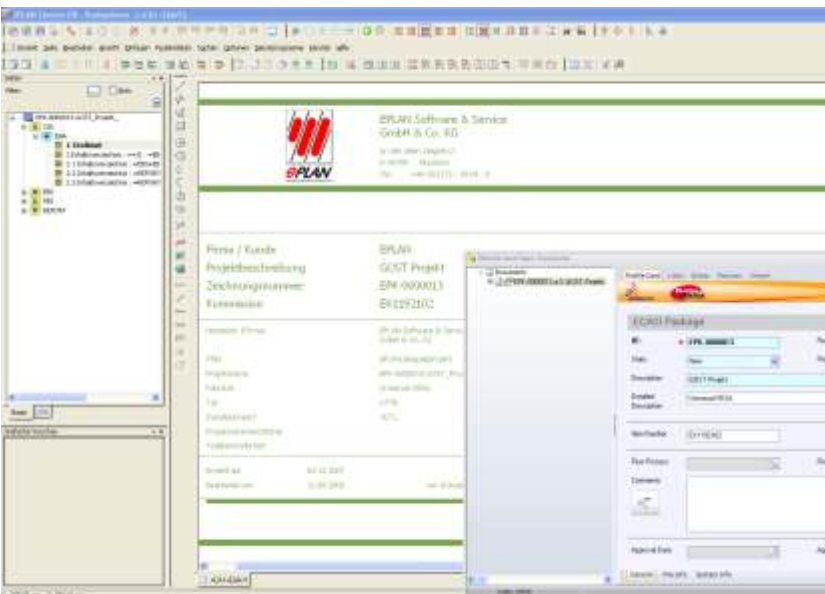
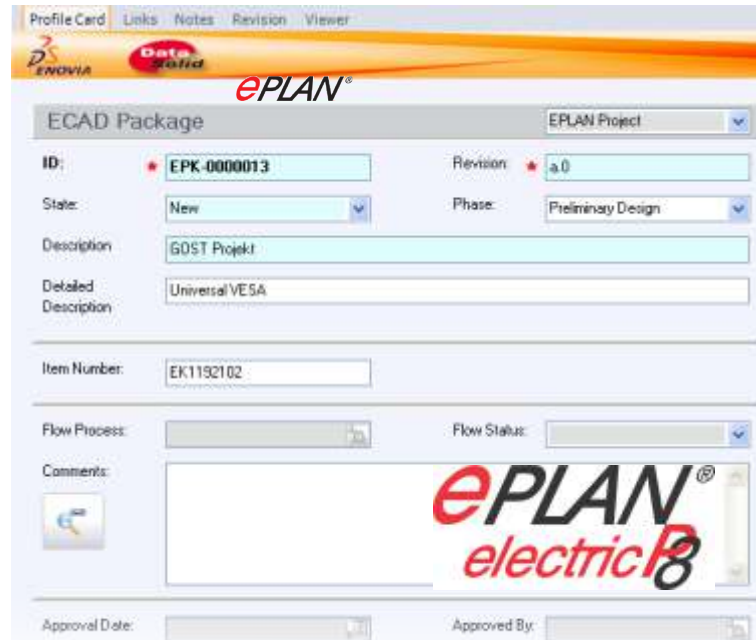
Manage your EPLAN® projects

**SmartECAD** manages all EPLAN® projects directly in ENOVIA SmarTeam® and supports a bidirectional exchange of project properties. Using the proven ENOVIA SmarTeam® revision processes all changes to the EPLAN® projects are transparent and traceable at any time.

Without any additional effort from users SmartECAD uses the archiving commands from EPLAN®. Previous project states can be reloaded to evaluate alternatives.

Simple Cross Project Engineering

SmartECAD integrates directly with an own menu into EPLAN®. EPLAN® remains as the independent authoring system for the electrical engineering and needs not to be closed to manage the projects with ENOVIA SmarTeam®. In addition, cross project relations and searches can be processed quickly and easily with ENOVIA SmarTeam®. This can be done 'only' between EPLAN® projects as well as between EPLAN® and mechanical design projects.



Advantages for EPLAN users:

- ENOVIA SmarTeam® commands integrated directly in EPLAN®
- Standardized project templates in ENOVIA SmarTeam®
- Revision security for your EPLAN® projects
- Bidirectional exchange of properties
- Automatic PDF creation and Viewing on non CAD workstations
- Cross project and cross department management of product data



DataSolid GmbH

Nobelstr. 3-5

D-41189 Mönchengladbach

Germany

System requirements:

- ENOVIA SmarTeam® V5 R18, SP3 or later
- EPLAN® Electric P8 Release 1.8.5 or later

Tel.: +49(0)2166/955-712 ■ Fax -719

eMail: info@datasolid.de

www.datasolid.com